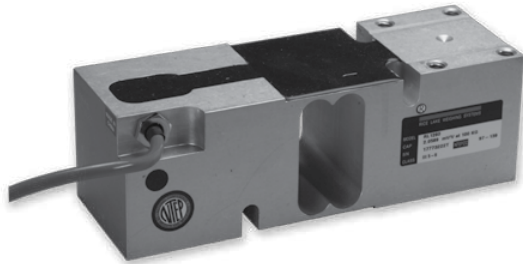
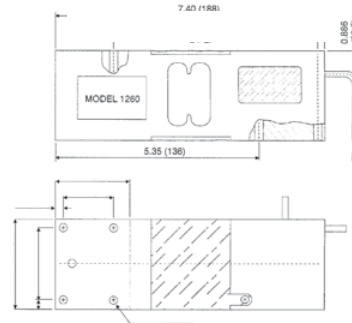


RL1260 Single Point, Aluminum NTEP 1:5000 Class III Single Cell



Picture is a representation of actual product



SPECIFICATIONS

Full Scale Output:
2.0 mV/V

Output Resistance:
350 ohms +/- 3

Input Resistance:
415 ohms +/- 15

Material/Finish:
Anodized aluminum

Temperature:
Compensated range
14°F to 104°F/-10°C to 40°C

Safe Overload:
200% of full scale at center loading point

Rated Excitation:
10V DC (15V maximum)

Total Error:
0.02% Full scale

Insulation Resistance:
5000 megohms

Seal Type:
Environmentally sealed

Cable Length:
3.1 m/10 ft

Cable Diameter:
.220 polyurethane jacket

Cable Color Code:
Green.....+ Excitation
Black.....- Excitation
Blue.....+ Sense
Brown.....- Sense
Red.....+ Signal
White.....- Signal

Max Platform Size:
24 in x 24 in

Warranty:
Two-year limited warranty

Approvals:
FM APPROVED IP68 CE

DIMENSIONS

RATED CAPACITY	A	B	C	D	E	F	G	H
kg/mm								
50-635	188	52	35	5.5	63.5	50	5/16-18 UNC-2B	62.3
lb/inches								
110.2-1400.2	7.40	2.05	1.38	.22	2.49	1.97	5/16-18 UNC-2B	2.45

ORDER INFORMATION

LOAD RATING		PART #	PRICE
50 kg	(110.2 lb)	41020	Consult
75 kg	(165.4 lb)	41021	Consult
100 kg	(220.5 lb)	41022	Consult
200 kg	(440.9 lb)	41023	Consult
250 kg	(551.2 lb)	41024	Consult
300 kg	(661.4 lb)	41025	Consult
500 kg	(1102.3 lb)	41026	Consult
635 kg	(1400 lb)	41027	Consult

INTERCHANGEABLE PRODUCTS

MANUFACTURER	MODEL	PAGE #
VPG TedeA-Huntleigh	1260	343
HBM®	PW16	251
Rice Lake Weighing Systems	RLPWW16	169

RICE LAKE WEIGHING SYSTEMS

